

YY

Ties with A World of Difference

CABLE ACCESSORIES



SINCE 1964
YONYU GROUP

Y.Y. CABLE ACCESSORIES CO., LTD

Advanced Technology

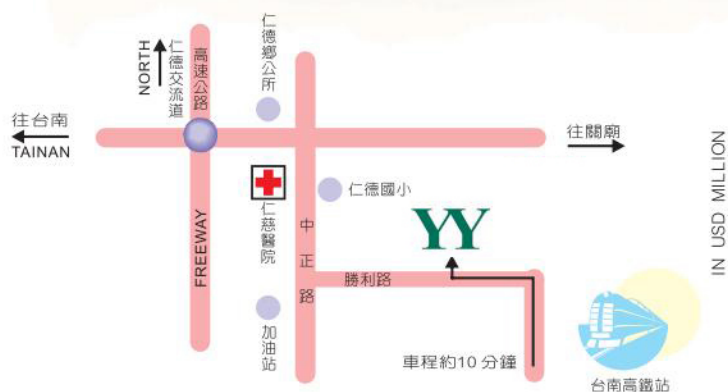
Quality First

追求完美是我們對品質唯一的要求

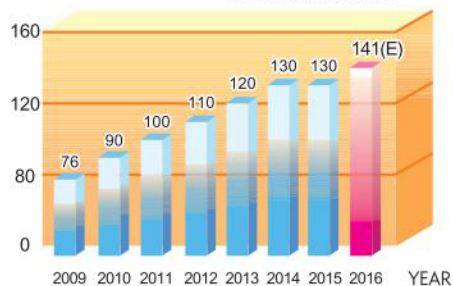


WELCOME TO YY

We would like to show you around,
and demonstrate how we have become
the leading supplier in the packing &
wiring-accessories industry in Asia.



SALES TURNOVER IN USD MILLION



PROTECTS

配線保護零件



PROTECTS 配線保護零件

科學研發 · 專業製造 · 先進管理



HEAT SHRINKABLE TUBINGS

(26) 薄壁熱收縮套管

- ◎材質：Polyolefin
- ◎顏色：黑色、白色、紅色、藍色、黃色、綠色，特殊顏色或特殊包裝歡迎訂製



- Material: Polyolefin
- Color: Black, White, Red, Blue, Yellow and Green (other colors are also available upon request)
- Shrink Ratio: 2 : 1
- Operation temp.: -55°C ~ 125°C
- Minimum shrink temperature: 70°C
- Minimum fully recovery temperature: 110°C
- Spec: UL 224, 125°C VW-1 600V

| 品名 ITEM NO. | 收縮前 AS SUPPLIED | | 收縮後 AFTER RECOVERY | | 包裝 PACKING |
|----------------|----------------------------------|---------------------------|-------------------------|-------------------------------------|---------------|
| | 內徑 MINIMUM EXPANDED I.D. (mm) | 壁厚 WALL THICKNESS (mm) | 內徑 MAXIMUM I.D. (mm) | 壁厚 RECOVERED WALL THICKNESS (mm) | |
| SCG-0.8 | 1.0±0.2 | 0.15±0.05 | 0.60 | 0.25±0.05 | 200M |
| SCG-1.0 | 1.5±0.3 | 0.20±0.05 | 0.60 | 0.33±0.05 | |
| SCG-1.5 | 2.0±0.3 | 0.20±0.05 | 0.75 | 0.36±0.05 | |
| SCG-2.0 | 2.5±0.3 | 0.20±0.05 | 1.00 | 0.44±0.05 | |
| SCG-2.5 | 3.0±0.3 | 0.25±0.05 | 1.25 | 0.44±0.05 | |
| SCG-3.0 | 3.5±0.3 | 0.25±0.05 | 1.50 | 0.44±0.05 | |
| SCG-3.5 | 4.0±0.3 | 0.25±0.05 | 1.75 | 0.44±0.05 | |
| SCG-4.0 | 4.5±0.3 | 0.25±0.05 | 2.00 | 0.44±0.05 | |
| SCG-4.5 | 5.0±0.3 | 0.25±0.05 | 2.25 | 0.44±0.08 | 100M |
| SCG-5.0 | 5.5±0.3 | 0.25±0.05 | 2.50 | 0.56±0.08 | |
| SCG-6.0 | 6.5±0.3 | 0.28±0.05 | 3.00 | 0.56±0.08 | |
| SCG-7.0 | 7.6±0.3 | 0.30±0.06 | 3.50 | 0.56±0.08 | |
| SCG-8.0 | 8.6±0.3 | 0.30±0.06 | 4.00 | 0.56±0.08 | |
| SCG-9.0 | 9.6±0.3 | 0.30±0.06 | 4.50 | 0.56±0.08 | |
| SCG-10.0 | 10.7±0.4 | 0.30±0.06 | 5.00 | 0.56±0.08 | |
| SCG-11.0 | 11.7±0.4 | 0.30±0.06 | 5.50 | 0.56±0.08 | |
| SCG-12.0 | 12.7±0.4 | 0.30±0.06 | 6.00 | 0.56±0.08 | |
| SCG-13.0 | 13.7±0.4 | 0.35±0.07 | 6.50 | 0.69±0.08 | |
| SCG-14.0 | 14.7±0.4 | 0.35±0.07 | 7.00 | 0.69±0.08 | |
| SCG-15.0 | 15.7±0.5 | 0.35±0.07 | 7.50 | 0.69±0.08 | 50M |
| SCG-16.0 | 16.7±0.5 | 0.35±0.07 | 8.00 | 0.69±0.08 | |
| SCG-18.0 | 19.0±0.5 | 0.40±0.10 | 9.00 | 0.77±0.15 | |
| SCG-20.0 | 21.0±0.5 | 0.40±0.10 | 10.00 | 0.77±0.15 | |
| SCG-22.0 | 23.0±0.5 | 0.40±0.10 | 11.00 | 0.77±0.15 | |
| SCG-25.0 | 26.0±1.0 | 0.45±0.10 | 12.50 | 0.87±0.15 | 25M |
| SCG-28.0 | 29.0±1.0 | 0.45±0.10 | 14.00 | 0.87±0.15 | |
| SCG-30.0 | 31.5±1.0 | 0.45±0.10 | 15.00 | 0.87±0.15 | |
| SCG-35.0 | 37.0±1.0 | 0.50±0.10 | 17.50 | 0.97±0.15 | |
| SCG-40.0 | 40.5±1.0 | 0.50±0.10 | 20.00 | 0.97±0.15 | |
| SCG-50.0 | 50.5±1.0 | 0.50±0.10 | 25.00 | 0.97±0.15 | |
| SCG-60.0 | 60.0±3.0 | 0.80±0.20 | 30.00 | 1.30±0.20 | 25M |
| SCG-80.0 | 80.0±3.0 | 0.80±0.30 | 40.00 | 1.50±0.30 | |
| SCG-100 | 100.0±4.0 | 0.80±0.30 | 50.00 | 1.50±0.30 | |

- Spec: UL 224, VW-1

| 品名 ITEM NO. | 收縮前 AS SUPPLIED | | 收縮後 AFTER RECOVERY | | 包裝 PACKING |
|----------------|---|-----------------------------|--|--|---------------|
| | 內徑 MINIMUM EXPANDED I.D. mm (in.) | 內徑 MAXIMUM I.D. mm (in.) | 壁厚 RECOVERED WALL THICKNESS mm (in.) | 壁厚 RECOVERED WALL THICKNESS mm (in.) | |
| SCG 1/16" | 1.6 (0.06") | 0.8 (0.03") | 0.356 (0.014") | 0.356 (0.014") | 200M |
| SCG 3/32" | 2.4 (0.09") | 1.2 (0.05") | 0.432 (0.017") | 0.432 (0.017") | |
| SCG 1/8" | 3.2 (0.13") | 1.6 (0.06") | 0.432 (0.017") | 0.432 (0.017") | |
| SCG 3/16" | 4.8 (0.19") | 2.4 (0.09") | 0.432 (0.017") | 0.432 (0.017") | 100M |
| SCG 1/4" | 6.4 (0.25") | 3.2 (0.13") | 0.559 (0.022") | 0.559 (0.022") | 50M |
| SCG 3/8" | 9.5 (0.37") | 4.8 (0.19") | 0.559 (0.022") | 0.559 (0.022") | |
| SCG 1/2" | 12.7 (0.5") | 6.4 (0.25") | 0.559 (0.022") | 0.559 (0.022") | |
| SCG 3/4" | 19.0 (0.75") | 9.5 (0.37") | 0.686 (0.027") | 0.686 (0.027") | |
| SCG 1" | 25.4 (1.0") | 12.7 (0.5") | 0.762 (0.03") | 0.762 (0.03") | 25M |
| SCG 1 1/4" | 31.8 (1.25") | 15.9 (0.63") | 0.864 (0.034") | 0.864 (0.034") | |
| SCG 1 1/2" | 38.1 (1.5") | 19.1 (0.75") | 0.864 (0.034") | 0.864 (0.034") | |
| SCG 2" | 50.8 (2.0") | 25.4 (1.0") | 0.965 (0.038") | 0.965 (0.038") | |
| SCG 3" | 76.2 (3.0") | 38.1 (1.5") | 1.070 (0.042") | 1.070 (0.042") | |
| SCG 4" | 101.6 (4.0") | 50.8 (2.0") | 1.070 (0.042") | 1.070 (0.042") | |

PROTECTS

配線保護零件



- Material: Polyolefin
- Color: Black, White, Red, Blue, Yellow (other colors are also available upon request)
- Shrink Ratio: 3 : 1
- Operation temp.: -55°C ~ 135°C
- Minimum shrink temperature: 70°C
- Minimum fully recovery temperature: 100°C
- Spec: UL 224, 125°C VW-1 600V

HEAT SHRINKABLE TUBINGS

(26) 薄壁熱收縮套管

- ◎材質：Polyolefin
- ◎顏色：黑色、白色、紅色、藍色、黃色、綠色
- 特殊顏色或特殊包裝歡迎訂製



| 品名 ITEM NO. | 收縮前 AS SUPPLIED | | 收縮後 AFTER RECOVERY | | 包裝 PACKING |
|----------------|-------------------------------------|---------------------------------|----------------------------|--|---------------|
| | 內徑 MINIMUM EXPANDED I.D. (mm) | 壁厚 WALL THICKNESS (mm) | 內徑 MAXIMUM I.D. (mm) | 壁厚 RECOVERED WALL THICKNESS (mm) | |
| SEG-3.0 | 3.00 | 0.15 | 1 | 0.50 | 200M |
| SEG-6.0 | 6.20 | 0.20 | 2 | 0.60 | 100M |
| SEG-9.0 | 9.10 | 0.23 | 3 | 0.65 | |
| SEG-12.0 | 12.10 | 0.23 | 4 | 0.70 | |
| SEG-18.0 | 18.00 | 0.28 | 6 | 0.75 | |
| SEG-25.0 | 25.00 | 0.32 | 8 | 1.00 | 50M |

- Material: Polyolefin
- Color: Black
- Shrink Ratio: 3 : 1
- Operation temp.: -45°C ~ 110°C
- Minimum shrink temperature: 80°C
- Minimum fully recovery temperature: 110°C
- Spec: UL 224, 125°C VW-1 600V
- Dual wall tubing environmentally seals and protects a wide variety of electrical and power distribution
- Application including breakout, and connector-to-cable transitions

DUAL WALL

(Adhesive-lined)

(28) 雙層含膠含水型熱收縮套管

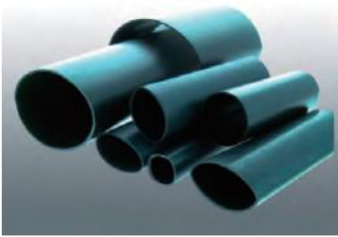
- ◎材質：Polyolefin
- ◎顏色：黑色
- 特殊顏色或特殊包裝歡迎訂製



| 品名 ITEM NO. | 收縮前 AS SUPPLIED | | 收縮後 AFTER RECOVERY | | | 包裝 PACKING |
|----------------|--|-------------------------------|-----------------------------------|-------------------------------------|--|---------------|
| | 內徑 MINIMUM EXPANDED I.D. mm (in.) | 壁厚 WALL THICKNESS mm | 內徑 MAXIMUM I.D. mm (in.) | 壁厚 WALL THICKNESS mm (in.) | 膠厚度 ADHESIVE THICKNESS mm (in.) | |
| RDW-103-1/8 | 3.2 (0.13") | 0.35 | 1.0 (0.04") | 1.00(0.04")±0.28 | 0.45(0.02")±0.08 | 200M/roll |
| RDW-103-3/16 | 4.8 (0.19") | 0.35 | 1.6 (0.06") | 1.00(0.04")±0.28 | 0.50(0.02")±0.08 | 100M/roll |
| RDW-103-1/4 | 6.4 (0.25") | 0.40 | 2.0 (0.08") | 1.00(0.04")±0.28 | 0.50(0.02")±0.08 | |
| RDW-103-3/8 | 9.5 (0.37") | 0.50 | 3.0 (0.12") | 1.40(0.06")±0.28 | 0.60(0.02")±0.08 | 50M/roll |
| RDW-103-1/2 | 12.7 (0.50") | 0.60 | 4.0 (0.16") | 1.70(0.07")±0.38 | 0.76(0.03")±0.15 | 1.22M/PC |
| RDW-103-5/8 | 15.0 (0.60") | 0.60 | 5.0 (0.19") | 1.90(0.07")±0.38 | 0.76(0.03")±0.15 | |
| RDW-103-3/4 | 19.1 (0.75") | 0.70 | 6.0 (0.24") | 2.25(0.09")±0.55 | 0.76(0.03")±0.15 | |
| RDW-103-1 | 25.4 (1.00") | 0.80 | 8.0 (0.31") | 2.54(0.10")±0.55 | 1.00(0.04")±0.20 | |
| RDW-103-1 1/2 | 38.1 (1.50") | 0.80 | 13.0 (0.51") | 2.54(0.10")±0.55 | 1.00(0.04")±0.20 | |

- Material: Polyolefin
- Color: Black
- Shrink Ratio: 4 : 1
- Operation temp.: -45°C ~ 110°C
- Minimum shrink temperature: 80°C
- Minimum fully recovery temperature: 110°C
- Spec: UL 224, 125°C VW-1 600V

| 品名 ITEM NO. | 收縮前 AS SUPPLIED | | 收縮後 AFTER RECOVERY | | | 包裝 PACKING |
|-----------------|--|-------------------------------|-----------------------------------|-------------------------------------|--|---------------|
| | 內徑 MINIMUM EXPANDED I.D. mm (in.) | 壁厚 WALL THICKNESS mm | 內徑 MAXIMUM I.D. mm (in.) | 壁厚 WALL THICKNESS mm (in.) | 膠厚度 ADHESIVE THICKNESS mm (in.) | |
| RRDW- 103-3/16 | 4.0(0.157") | 0.40 | 1.0(0.04") | 1.00(0.04")±0.28 | 0.50(0.02")±0.08 | 1.22M /PC |
| RRDW- 103-5/16 | 8.0(0.315") | 0.45 | 2.0(0.06") | 1.00(0.04")±0.28 | 0.50(0.02")±0.08 | |
| RRDW- 103-1/2 | 12.0(0.47") | 0.45 | 3.0(0.08") | 1.40(0.06")±0.28 | 0.60(0.02")±0.10 | |
| RRDW- 103-5/8 | 16.0(0.63") | 0.55 | 4.0(0.12") | 1.70(0.06")±0.38 | 0.76(0.03")±0.15 | |
| RRDW- 103-1 | 24.0(0.94") | 0.70 | 6.0(0.16") | 2.25(0.09")±0.55 | 0.76(0.03")±0.15 | |
| RRDW- 103-1 1/4 | 32.0(1.26") | 0.70 | 8.0(0.24") | 2.54(0.10")±0.55 | 1.00(0.04")±0.20 | |
| RRDW- 103-2 | 52.0(2.05") | 0.70 | 13.0(0.31") | 2.54(0.10")±0.55 | 1.00(0.04")±0.20 | |



MEDIUM WALL (Adhesive-lined) (28) 中厚壁含膠型熱收縮套管

◎材質：Polyolefin
◎顏色：黑色
特殊顏色或特殊包裝歡迎訂製

- Material: Polyolefin
- Color: Black
- Shrink Ratio: 3 : 1
- Operation temp.: -55°C ~ 110°C
- Minimum shrink temperature: 80°C
- Minimum fully recovery temperature: 120°C
- Medium Wall Tubing for aerial, underground and direct burial insulation
- The tubing has a hot melt adhesive liner which melts as the tube is shrunk and creates a strong bond between the cable jacket and the tube

| 品名 ITEM NO. | 收縮前 AS SUPPLIED | | 收縮後 AFTER RECOVERY | | 包裝 PACKING |
|----------------|--|-------------------------------|--------------------------------|---|---------------|
| | 內徑 MINIMUM EXPANDED I.D. mm (in.) | 壁厚 WALL THICKNESS mm | 內徑 MAXIMUM I.D. mm (in.) | 壁厚 RECOVERED WALL THICKNESS mm | |
| RMW-04A | 12.0 (0.47") | 0.38 | 3.0 (0.11") | 1.8 | 1.22M/PC |
| RMW-07A | 22.0 (0.75") | 0.67 | 6.0 (0.23") | 2.2 | |
| RMW-11A | 28.0 (1.00") | 0.67 | 6.0 (0.27") | 2.5 | |
| RMW-13A | 33.0 (1.30") | 0.67 | 8.0 (0.31") | 2.5 | |
| RMW-15A | 40.0 (1.50") | 0.75 | 12.0 (0.50") | 2.5 | |
| RMW-20A | 55.0 (2.00") | 0.85 | 16.0 (0.66") | 2.7 | |
| RMW-27A | 75.0 (2.80") | 0.85 | 22.0 (0.86") | 3 | |
| RMW-35A | 95.0 (3.60") | 0.85 | 25.0 (1.02") | 3 | |
| RMW-47A | 115.0 (4.52") | 0.85 | 34.0 (1.34") | 3.3 | |



HEAT SHRINKABLE TUBING BOX (99) 熱縮管整理盒

- Material: Transparent PP
- Provided with empty box only; KITS packing with different color and sizes are also available upon request.
- KITS packing provides an economical and excellent solution for electrical and electronics technicians

| 品名 ITEM NO. | 尺寸 Size (cm) | 顏色 Color | 包裝 PACKING |
|----------------|-----------------|-------------|---------------|
| STB | 21*12.8*3.4 | Natural | 120 boxes/ctn |



HOT AIR GUN (99) 熱風槍

- Design of dual overheat protection: Thermostat, auto power off
- Three-speed air flow / temperature switch
- Anti-vibration rubber base and handle

| 品名 ITEM NO. | 規格 Spec | 出風度 & 氣流風速 Air temperature & Browing speed |
|----------------|------------------|---|
| HL-0 | 120V / 1300W | Speed I: 300°C 240 ι /min Speed II: 500°C 450 ι /min |
| HL-1 | 120V / 1400W | Speed I: 50°C 200 ι /min Speed II: 400°C 300 ι /min Speed III: 600°C 500 ι /min |
| HL-4 | 230-240V / 1800W | Speed I: 50°C 200 ι /min Speed II: 400°C 300 ι /min Speed III: 600°C 500 ι /min |

PROTECTS

配線保護零件

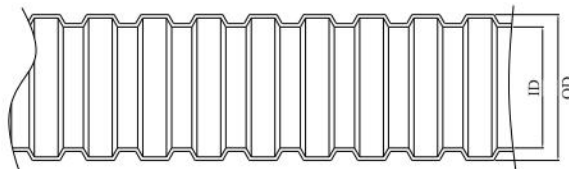


- Material: PP
- Flammability: UL 94V-2
- Color: Black
- Thermal distortion temperature : +80°C
- Cold resistances : -40°C

SPLIT FLEXIBLE CONDUIT

(76) 剖開式浪管

- ◎材質：PP
- ◎顏色：黑色
- ◎汽機車配線用



| 品名 ITEM NO. | 規格 SIZE | 內徑 I.D. mm | 外徑 O.D. mm | 包裝 PACKING |
|----------------|------------|---------------|---------------|---------------|
| FCS-1005 | 5 | 5.4 | 7.8 | 300M |
| FCS-1007 | 7 | 7.4 | 10.2 | |
| FCS-1011 | 10 | 10.7 | 14.1 | 200M |
| FCS-1013 | 13 | 13.2 | 17.5 | |
| FCS-1015 | 15 | 15 | 19.5 | 100M |
| FCS-1019 | 19 | 19.3 | 23.8 | |
| FCS-1022 | 22 | 22.2 | 27 | |
| FCS-1025 | 25 | 25 | 30 | 50M |
| FCS-1028 | 28 | 28.2 | 34 | |
| FCS-1032 | 32 | 32.4 | 38 | |

- ◎材質：Nylon 6
- ◎顏色：黑色
- ◎汽機車配線用

- Material: Nylon 6
- Flammability: UL 94V-2
- Thermal distortion temperature : +150°C
- Cold resistances : -30°C
- Application: To protect the wiring and high temperature resistance which is suitable for automotive industry

| 品名 ITEM NO. | 規格 SIZE | 內徑 I.D. mm | 外徑 O.D. mm | 包裝 PACKING |
|----------------|------------|---------------|---------------|---------------|
| FCA-1007 | 7 | 7.14 | 10.2 | 300M |
| FCA-1011 | 10 | 10.7 | 14.1 | 200M |
| FCA-1013 | 13 | 13.2 | 17.5 | |
| FCA-1015 | 15 | 15 | 19.5 | 100M |
| FCA-1019 | 19 | 19.3 | 23.8 | |

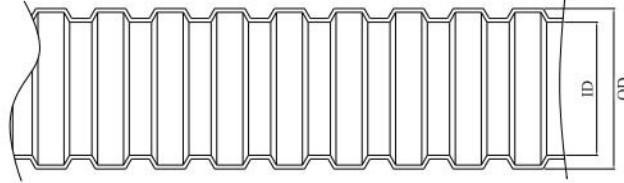


SOLID FLEXIBLE CONDUIT

(76) 密閉式浪管

- ◎材質：Nylon 6
- ◎顏色：黑色 (亦有灰色，歡迎洽詢)
- ◎電工器材用

- Material: Nylon 6
- Color: Black (Grey is also available under request)
- Thermal distortion temperature : +150°C
- Cold resistances : -30°C



| 品名 ITEM NO. | 規格 SIZE | 內徑 I.D. mm | 外徑 O.D. mm | 包裝 PACKING |
|----------------|------------|---------------|---------------|---------------|
| FCP-1007 | 1/4" | 6.8 | 10 | 100M |
| FCP-1009 | 5/16" | 9.6 | 13 | |
| FCP-1011 | 3/8" | 12 | 15.8 | |
| FCP-1016 | 1/2" | 16.2 | 21.2 | |
| FCP-1021 | 3/4" | 21.9 | 28.5 | 50M |
| FCP-1029 | 1" | 27.6 | 34.5 | |
| FCP-1036 | 1 1/4" | 36 | 42.5 | 25M |
| FCP-1048 | 1 1/2" | 47 | 54.5 | |

- ◎材質：PE
- ◎顏色：灰色 (亦有黑色，歡迎洽詢)
- ◎水電材料用

- Material: PE
- Color: Grey (Black is also available under request)
- Thermal distortion temperature : +80°C
- Cold resistances : -30°C

| 品名 ITEM NO. | 規格 SIZE | 內徑 I.D. mm | 外徑 O.D. mm | 包裝 PACKING |
|----------------|------------|---------------|---------------|---------------|
| FCC-18 (3分) | 3/8" | 13.8 | 17.8 | 100M |
| FCC-22 (4分) | 1/2" | 17.2 | 22 | |
| FCC-26 (6分) | 3/4" | 21.2 | 26 | |
| FCC-34 (1吋) | 1" | 28.7 | 34 | 50M |
| FCC-42 (1吋2分) | 1 1/4" | 36 | 42 | |
| FCC-48 | 1 1/2" | 40 | 48 | |
| FCC-60 | 2" | 52 | 60 | |

PROTECTS

配線保護零件



- Material: Fiber Glass、Silicone
- Working temp.: up to 180°C
- Color: White (Other colors are also available upon request)
- For Use: For tubing use of heating electric equipment
- UL certified "VW-1"



SILICON COATED FIBERGLASS SLEEVE

(26) 玻璃纖維套管

- ◎材質：玻璃纖維原絲、軟質矽膠
- ◎工作溫度：180 度
- ◎顏色：白色，其餘顏色可訂製
- ◎用途：適用於一般馬達、變壓器、冷凍、冷氣器具等



Break Down Voltage 絕緣破壞電壓 (KV) :
Under Normal Condition Ave. Value 2.5KV
Under Normal Condition Min. Value 2.0KV
For low voltage circuits use

| 品名 ITEM NO. | 內徑 I.D. (mm) | 內徑公差 ID TOLERANCE (mm) | 壁厚 WALL THICKNESS (mm) | 包裝 PACKING |
|----------------|-----------------|---------------------------|---------------------------|---------------|
| SFS-2010 | 1 | +0.25 -0.10 | ≧ 0.28 | 100M/roll |
| SFS-2015 | 1.5 | +0.25 -0.10 | ≧ 0.28 | |
| SFS-2020 | 2 | +0.25 -0.10 | ≧ 0.28 | |
| SFS-2025 | 2.5 | +0.25 -0.10 | ≧ 0.28 | |
| SFS-2030 | 3 | +0.25 -0.10 | ≧ 0.28 | |
| SFS-2035 | 3.5 | +0.25 -0.10 | ≧ 0.28 | |
| SFS-2040 | 4 | +0.30 -0.15 | ≧ 0.30 | |
| SFS-2045 | 4.5 | +0.30 -0.15 | ≧ 0.30 | |
| SFS-2050 | 5 | +0.30 -0.15 | ≧ 0.30 | 50M/roll |
| SFS-2060 | 6 | +0.30 -0.15 | ≧ 0.30 | |
| SFS-2070 | 7 | +0.30 -0.15 | ≧ 0.30 | |
| SFS-2080 | 8 | +0.35 -0.20 | ≧ 0.30 | |
| SFS-2090 | 9 | +0.35 -0.20 | ≧ 0.30 | 1M/pc |
| SFS-2100 | 10 | +0.35 -0.20 | ≧ 0.30 | |
| SFS-2120 | 12 | +0.50 -0.30 | ≧ 0.35 | |
| SFS-2140 | 14 | +0.50 -0.30 | ≧ 0.35 | |
| SFS-2160 | 16 | +0.50 -0.30 | ≧ 0.35 | |
| SFS-2180 | 18 | +0.50 -0.30 | ≧ 0.35 | |
| SFS-2200 | 20 | +0.50 -0.30 | ≧ 0.35 | |

Break Down Voltage 絕緣破壞電壓 (KV) :
Under Normal Condition Ave. Value 1.5KV
Under Normal Condition Min. Value 1.2KV
For general insulation

| 品名 ITEM NO. | 內徑 I.D. (mm) | 內徑公差 ID TOLERANCE (mm) | 壁厚 WALL THICKNESS (mm) | 包裝 PACKING |
|----------------|-----------------|---------------------------|---------------------------|---------------|
| SFS-3010 | 1 | +0.25 -0.10 | ≧ 0.28 | 100M/roll |
| SFS-3015 | 1.5 | +0.25 -0.10 | ≧ 0.28 | |
| SFS-3020 | 2 | +0.25 -0.10 | ≧ 0.28 | |
| SFS-3025 | 2.5 | +0.25 -0.10 | ≧ 0.28 | |
| SFS-3030 | 3 | +0.25 -0.10 | ≧ 0.28 | |
| SFS-3035 | 3.5 | +0.25 -0.10 | ≧ 0.28 | |
| SFS-3040 | 4 | +0.30 -0.15 | ≧ 0.30 | |
| SFS-3045 | 4.5 | +0.30 -0.15 | ≧ 0.30 | |
| SFS-3050 | 5 | +0.30 -0.15 | ≧ 0.30 | 50M/roll |
| SFS-3060 | 6 | +0.30 -0.15 | ≧ 0.30 | |
| SFS-3070 | 7 | +0.30 -0.15 | ≧ 0.30 | |
| SFS-3080 | 8 | +0.35 -0.20 | ≧ 0.30 | |
| SFS-3090 | 9 | +0.35 -0.20 | ≧ 0.30 | 1M/pc |
| SFS-3100 | 10 | +0.35 -0.20 | ≧ 0.30 | |
| SFS-3120 | 12 | +0.50 -0.30 | ≧ 0.35 | |
| SFS-3140 | 14 | +0.50 -0.30 | ≧ 0.35 | |
| SFS-3160 | 16 | +0.50 -0.30 | ≧ 0.35 | |
| SFS-3180 | 18 | +0.50 -0.30 | ≧ 0.35 | |
| SFS-3200 | 20 | +0.50 -0.30 | ≧ 0.35 | |
| SFS-3220 | 22 | +0.50 -0.30 | ≧ 0.35 | |
| SFS-3250 | 25 | +0.50 -0.30 | ≧ 0.35 | |

PROTECTS

配線保護零件



PROTECTS 配線保護零件



SPLIT BRAIDED SLEEVING

(76) 剖開式編織網管

- ◎材質：聚脂纖維
- ◎特色：抗紫外線；耐腐蝕、耐磨損
- ◎用途：適用於電子業、汽車業、船運及其他工業之電纜、管線保護

- Material: PET (Polyethylene Terephthalate)
- Features: UV resistant; Not affected by most chemicals and solvents
- Application: Electronics, automotive, marine and industrial wire harnessing applications
- Operating temperature : -40°C ~125°C

| 品名 ITEM NO. | 尺寸 Nominal Size | | 擴張寬度 Opening expansion width mm | 包裝 PACKING Feet(M)/R |
|----------------|--------------------|--------|---------------------------------------|----------------------------|
| | mm | in. | | |
| BSS-032 | 3.2 | 1/8" | 23±4 | 100ft(30.5M) |
| BSS-064 | 6.4 | 1/4" | 45±4 | |
| BSS-127 | 12.7 | 1/2" | 60±4 | |
| BSS-191 | 19.1 | 3/4" | 89±4 | 50ft(15.2M) |
| BSS-254 | 25.4 | 1" | 110±4 | 25ft(7.6M) |
| BSS-381 | 38.1 | 1-1/2" | 150±4 | |
| BSS-508 | 50.8 | 2" | 205±5 | |



SOLID BRAIDED SLEEVING

(76) 密閉式編織網管

- ◎材質：聚脂纖維
- ◎特色：抗紫外線；耐腐蝕、耐磨損
- ◎用途：適用於電子業、汽車業、船運及其他工業之電纜、管線保護

- Material: PET (Polyethylene Terephthalate)
- Features: UV resistant; Not affected by most chemicals and solvents
- Application: Electronics, automotive, marine and industrial wire harnessing applications
- Operating temperature : -40°C ~ 150°C

| 品名 ITEM NO. | 尺寸 Nominal Size | | 擴張寬度 Expansion Range DIA | | 編織數 Ends | 包裝 PACKING Feet(M)/R |
|----------------|--------------------|--------|-----------------------------|----------|-------------|----------------------------|
| | mm | in. | Min (mm) | Max (mm) | | |
| BS-032 | 3.2 | 1/8" | 2.37 | 6.35 | 1 | 1000ft(305M)/R |
| BS-064 | 6.4 | 1/4" | 3.17 | 9.53 | 3 | |
| BS-095 | 9.5 | 3/8" | 4.76 | 15.88 | 3 | |
| BS-127 | 12.7 | 1/2" | 6.35 | 19.05 | 3 | 500ft(153M)/R |
| BS-191 | 19.1 | 3/4" | 12.7 | 31.75 | 3 | 250ft(77M)/R |
| BS-320 | 32 | 1-1/4" | 19.05 | 38.1 | 3 | |
| BS-381 | 38.1 | 1-1/2" | 25.4 | 57.15 | 4 | |
| BS-445 | 44.5 | 1-3/4" | 31.75 | 69.85 | 4 | 200ft(61M)/R |
| BS-500 | 50 | 2" | 44.5 | 75 | 5 | |



WRAPAROUND BRAIDED SLEEVING

(76) 車用編織網管

- ◎材質：聚脂纖維
- ◎特色：抗紫外線；彈性佳；阻燃
- ◎用途：剖開捲式設計，方便快速收整線束
- ◎工作溫度：-40°C ~150°C

- Material: PET (Polyethylene Terephthalate)
- Features: Flame retardant, UV resistant; Flexible; Not affected by most chemicals and solvents
- Application: quick and easily to install and remove a group of wires, especially for automotive wire assembly
- Operating temperature : -40°C ~150°C

| 品名 ITEM NO. | 尺寸 Nominal Size | | 擴張寬度 Opening expansion width (mm) | 包裝 PACKING M/ Roll |
|----------------|--------------------|------------|---|--------------------------|
| | mm | in. | | |
| WSS-005 | 5 | 13 / 64" | 29±5 | 30.5 |
| WSS-008 | 8 | 5 / 16" | 45±5 | |
| WSS-010 | 10 | 25 / 64" | 55±5 | |
| WSS-013 | 13 | 33 / 64" | 68±5 | 22.8 |
| WSS-016 | 16 | 5 / 8" | 75±5 | |
| WSS-019 | 19 | 3 / 4" | 95±5 | |
| WSS-025 | 25 | 63 / 64" | 102±5 | 15.2 |
| WSS-029 | 29 | 19 / 64" | 114±5 | |
| WSS-032 | 32 | 1-17 / 64" | 131±5 | |
| WSS-038 | 38 | 1-1 / 2" | 160±5 | |
| WSS-048 | 48 | 1-57 / 64" | 202±5 | |
| | | | | 7.6 |

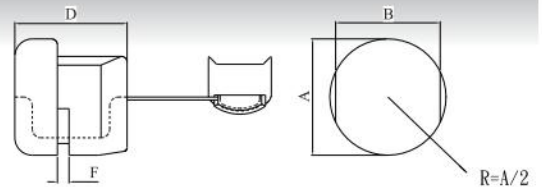
科學研發 · 專業製造 · 先進管理

PROTECTS

配線保護零件



- Material: Nylon 6/6
- Flammability: UL 94V-2
- Color: Black
- For Use: To insulate and protect AC cords



STRAIN-RELIEF BUSHINGS (21) 電源線扣

- ◎材質：Nylon 6/6
- ◎防火等級：UL 94V-2
- ◎顏色：黑色
- ◎固定電源線，避免電源線被機板割傷，適用於各種電器產品及燈飾等電源線出口



| 品名 ITEM NO. | 形狀 Cross Section Shape | 適用 UL 電線 UL Wires Accommodated | 適用電線尺寸 Approx. Wire size mm | 機板口徑 Mounting Holes A mm | 機板口徑 Mounting Holes B mm | 適用機板 厚度 Max. Thickness F (mm) | 線扣長度 Length D mm | 包裝 PACKING |
|----------------|------------------------------|--------------------------------------|-----------------------------------|-----------------------------------|-----------------------------------|--|------------------------|---------------|
| SRB 2P-4 | FLAT (扁線用) | SPT-1 | 3X5.6 | 9.50 | 8.70 | 1.60 | 10.30 | 1,000 pcs |
| SRB 3P-4 | | SPT-1 | 3X5.6 | 11.00 | 9.90 | 1.60 | 10.30 | |
| SRB 3W-1 | | SPT-1 | 3X5.6 | 11.00 | 9.90 | 2.50 | 10.30 | |
| SRB 4N-4 | | SPT-2 | 3.71 3.8X7.6 | 12.7-13.1 | 11.40 | 1.60 | 10.40 | |
| SRB 4K-4 | ROUND (圓線用) | SPT-2 | 3.71 3.8X7.6 | 12.7-13.1 | 11.40 | 2.50 | 10.40 | 500 pcs |
| SRB 5N-4 | | SVI/SVT | 6.4 φ-7.4 φ | 12.7-13.1 | 11.50 | 1.60 | 11.00 | |
| SRB 5P-4 | | SVI/SVT | 6.4 φ-7.4 φ | 12.7-13.1 | 11.50 | 2.50 | 11.00 | |
| SRB 6N-4 | | SJT 3C#18 | 7.6 φ | 15.90 | 14.00 | 1.60 | 14.80 | |
| SRB 6P-4 | | SJT 3C#18 | 7.6 φ | 15.90 | 14.00 | 3.20 | 14.80 | 100 pcs |
| SRB 6N3-4 | | SJT 3C#16 | 8.2 φ-9.2 φ | 15.90 | 14.00 | 1.60 | 14.80 | |
| SRB 6P3-4 | | SJT 3C#16 | 8.2 φ-9.2 φ | 15.90 | 14.00 | 3.20 | 14.80 | |
| SRB 7N-2 | | SJT 3C#14 | 9.2 φ-10.5 φ 11 φ | 19.00 19.80 | 16.80 | 1.60 | 19.20 | |
| SRB 7P-2 | | | 9.2 φ-10.5 φ 11 φ | 19.00 19.80 | 16.80 | 3.20 | 19.20 | |
| SRB 8R-3 | | SJT 3C#12 | 12.0 φ-15.2 φ | 22.20 | 21.30 | 3.60 | 20.30 | 100 pcs |
| SRB 9R-1 | ROUND (電源供應器 專用) | SJT, 3C#10 | φ 15.2-φ 16.3 φ 17.5 | 28.0/30.2 | 25.50 | 3.20 | 25.20 | |
| SRB 9R-7 | | | 11 φ-15 φ | 20.00 | 19.00 | 1.60 | 17.50 | |

直角型電源線扣

| 品名 ITEM NO. | 形狀 Cross Section Shape | 適用 UL 電線 UL Wires Accommodated | 適用電線尺寸 Approx. Wire size mm | 機板口徑 Mounting Holes A mm | 機板口徑 Mounting Holes B mm | 適用機板 厚度 Max. Thickness F (mm) | 線扣長度 Length D mm | 包裝 PACKING |
|----------------|------------------------------|--------------------------------------|-----------------------------------|-----------------------------------|-----------------------------------|--|------------------------|---------------|
| SRB 1312 | Flat (扁線用) | SPT-1 SPT-2 | 3.0x5.6 3.8x7.1 | 12.70 | 11.80 | 2.60 | 17.70 | 100 pcs |

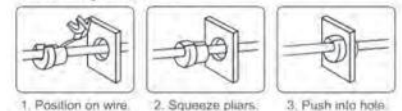


STRAIN-RELIEF PLIER (99) 電源線扣工具

- ◎與電源線扣一起使用，使用線扣工具夾緊線扣塞入機板出線孔固定電源線

| 品名 ITEM NO. | 使用範圍 SPECIFICATION | 包裝 PACKING |
|----------------|-----------------------|---------------|
| SRP-205 | 3/8"-3/4" DIA | PC |

● Assembly Procedure:

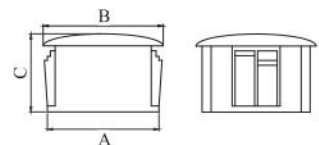


HOLE PLUGS (21) 扣式塞頭

- ◎材質：Nylon 6/6
- ◎防火等級：UL 94V-2
- ◎顏色：黑色 (白色亦可接受訂製)
- ◎齒溝固定 3.2mm 以下之機板厚度均可適用



- Material: Nylon 6/6
- Flammability: UL 94V-2
- Color: Black (White color is also available upon request)
- For Use: Be installed with fingertip pressure into unneeded hole, stay smooth appearance



| 品名 ITEM NO. | 機板孔口徑 Mounting Holes A mm (in) | 尺寸 Dimensions | | 包裝 PACKING |
|----------------|--------------------------------------|---------------|------|---------------|
| | | B mm | C mm | |
| HP-6 | 6 (0.24") | 7.8 | 7.8 | 100pcs |
| HP-8 | 7.9 (0.31") | 10.3 | 8.1 | |
| HP-10 | 9.5 (0.37") | 13.0 | 10.5 | |
| HP-13 | 12.7 (0.50") | 16.5 | 10.9 | |
| HP-16 | 15.9 (0.63") | 19.5 | 10.0 | |
| HP-19 | 19.0 (0.75") | 22.9 | 10.0 | |
| HP-22 | 22.2 (0.87") | 25.8 | 11.3 | |
| HP-25 | 25.3 (0.99") | 29.0 | 11.6 | |
| HP-30 | 30.0 (1.18") | 34.2 | 12.0 | |
| HP-38 | 38.1 (1.50") | 42.1 | 11.2 | |
| HP-45 | 44.5 (1.75") | 49.7 | 11.8 | |

PROTECTS

配線保護零件



PROTECTS 配線保護零件



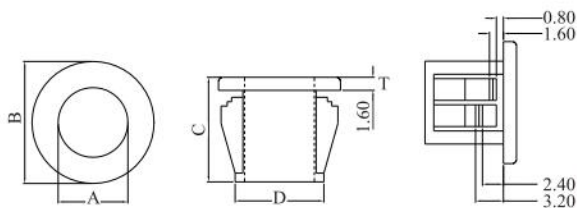
SNAP BUSHINGS

(21) 扣式護線環

- ◎材質：Nylon 6/6
- ◎防火等級：94V-2
- ◎顏色：黑色
- ◎兩側之齒鉤，對 3.2mm 以下之機板厚度均可適用
- ◎具絕緣與保護電源線雙重功能，用手指將扣式塞頭套入機板固定孔

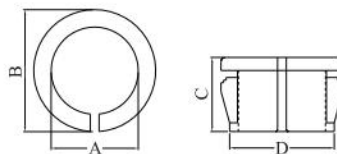


- Material: Nylon 6/6
- Flammability: UL 94V-2
- Color: Black
- For Use: Smooth and insulate the raw edged holes in metal chassis

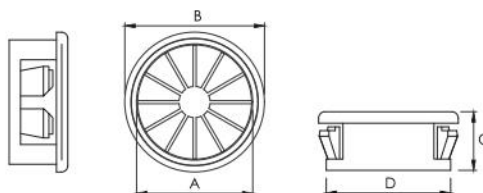


| 品名 ITEM NO. | 機板口徑 Mounting Hole Diameter D (mm) | 覆蓋 Head Diameter B mm | 內徑 Inside Diameter A mm | 高度 Overall Height C mm | 厚度 T mm | 包裝 PACKING |
|----------------|--|--------------------------------|----------------------------------|---------------------------------|------------|---------------|
| SB-08 | 8.0 | 9.6 | 5.2 | 8.3 | 1.6 | 1000pcs |
| SB-10 | 9.5 | 12.0 | 6.4 | 10.3 | 1.6 | |
| SB-11 | 11.0 | 13.6 | 8.2 | 10.3 | 1.6 | |
| SB-13 | 13.0 | 15.1 | 9.8 | 10.3 | 1.6 | |
| SB-16 | 15.6 | 18.1 | 12.9 | 10.3 | 1.6 | |
| SB-19 | 19.0 | 21.7 | 14.3 | 10.3 | 1.6 | 100pcs |
| SB-22 | 22.2 | 24.2 | 17.5 | 11.5 | 1.6 | |
| SB-26 | 25.5 | 28.5 | 19.1 | 11.5 | 1.6 | |
| SB-30 | 30.0 | 33.3 | 24.1 | 11.5 | 1.6 | |
| SB-38 | 38.1 | 42.1 | 29.0 | 11.4 | 1.5 | |
| SB-45 | 44.5 | 47.8 | 35.4 | 11.6 | 1.5 | |
| SB-50 | 50.1 | 54.6 | 41.6 | 11.8 | 1.6 | |

OCB



| 品名 ITEM NO. | 機板口徑 Mounting Hole Diameter D (mm) | 覆蓋 Head Diameter B (mm) | 內徑 Inside Diameter A (mm) | 高度 Overall Height C (mm) | 包裝 PACKING |
|----------------|--|----------------------------|---------------------------------|-----------------------------|---------------|
| OCB-10 | 9.5 | 11.8 | 6 | 9.8 | 100pcs |
| OCB-13 | 12.5-13 | 14.6 | 9 | 10.1 | 1000pcs |
| OCB-16 | 15.5-16 | 17.8 | 12 | 10.5 | |
| OCB-19 | 18-19 | 21 | 14.4 | 11.0 | 100pcs |
| OCB-22 | 22 | 24.6 | 17 | 10.3 | |
| OCB-26 | 25.5 | 28 | 20 | 10.6 | |



| 品名 ITEM NO. | 機板口徑 Mounting Hole Diameter D (mm) | 覆蓋 Head Diameter B (mm) | 內徑 Inside Diameter A (mm) | 高度 Overall Height C (mm) | 包裝 PACKING |
|----------------|--|----------------------------|---------------------------------|-----------------------------|---------------|
| RSB-21 | 20.6 | 24.3 | 15.2 | 10.0 | 100pcs |
| RSB-22 | 22.2 | 25.4 | 17.0 | 11.5 | |
| RSB-25 | 25.4 | 28.5 | 20.4 | 11.5 | |
| RSB-35 | 34.9 | 38.5 | 29.5 | 11.7 | |

科學研發 · 專業製造 · 先進管理

PROTECTS

配線保護零件

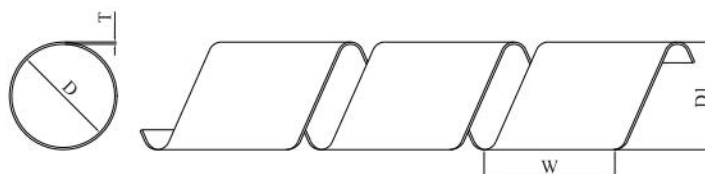


- Material: PE
- Color: Stock in Natural & Black (other colors are also available upon request)
- For Use: Fix-end of band with YY ties and spiral band in clockwise direction flexible, durable and reusable
- All sizes are available for roll packing (SBP series)

SPIRAL WRAPPING BAND

(20) 捲式結束帶

- ◎材質: PE
- ◎顏色: 本色、黑色
- ◎特點: 柔軟性佳、結束力強、可多次使用
- ◎使用方法: 取所需之長度以永裕之束帶固定一端, 再將捲束帶依順時針方向捲繞



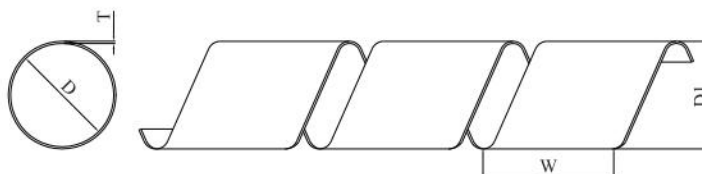
| 品名 ITEM NO. | 螺距 W mm | 內徑 I.D. D mm | 外徑 O.D. D1 mm | 厚度 T mm | 最小最大結束範圍 Wrapping Range | 包裝 PACKING |
|----------------|------------|-----------------|------------------|------------|----------------------------|---------------|
| SB-03 | 6±1 | 2.0 | 3 | 0.5±0.1 | 2-20 | 10M/bag |
| SB-04 | 7±1 | 2.8 | 4 | 0.6±0.1 | 3-25 | |
| SB-06 | 8±1.2 | 4.6 | 6 | 0.7±0.2 | 4-50 | |
| SB-08 | 12±1.2 | 6.4 | 8 | 0.8±0.2 | 6-60 | |
| SB-10 | 12±1.2 | 8.2 | 10 | 0.9±0.3 | 8-60 | |
| SB-12 | 14±1.5 | 10.0 | 12 | 1.0±0.5 | 9-65 | |
| SB-15 | 16±1.5 | 13.0 | 15 | 1.0±0.5 | 13-70 | |
| SB-19 | 18±2 | 16.4 | 19 | 1.3±0.8 | 15-100 | |
| SB-24 | 21±2 | 21.0 | 24 | 1.5±1 | 18-130 | |



FAST SPIRAL WRAPPING BAND

(20) 快速蛇捲

- ◎材質: 聚乙烯、除 FST-32 為聚丙烯
- ◎用途: 便於收納各種線束、纜線
- ◎本產品內含快速蛇捲及工具, 亦可分開購買

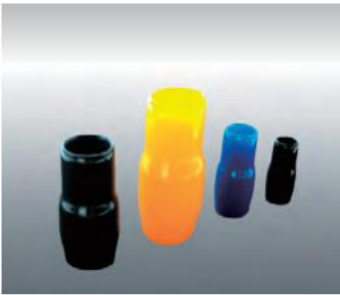


- Material: PE, except for FST-32 is PP.
- Application: Wire harness and cable bundling for electrical industry, panel building and office use
- This item includes one wrapping band and one installation tool. Separate purchase is available as well.

| 品號 ITEM NO. | 螺距 W mm | 內徑 I.D. D mm | 厚度 T mm | 最大結束範圍 Wrapping Range | 包裝 PACKING |
|----------------|------------|-----------------|------------|--------------------------|-----------------------------------|
| FST-08SET | 10 | 8 | 0.8 | 10 | 2M/bag with one installation tool |
| FST-15SET | 14 | 15 | 0.8 | 16 | |
| FST-20SET | 17 | 20 | 0.9 | 23 | |
| FST-25SET | 20 | 25 | 1.0 | 29 | |
| FST-32SET | 23 | 32 | 1.3 | 35 | |

PROTECTS

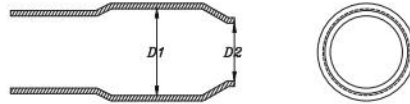
配線保護零件



VINYL END CAP (22) 絕緣套管

◎材質：軟質 PVC
◎顏色：紅色、白色、黃色、藍色、綠色、黑色、棕色

- Material: Soft PVC
- Color: Red, White, Yellow, Blue, Green, Black and Brown
- Operation temp.: Under 80°C , voltage 300V
- For Use: For the insulation works of wire end terminal



| 品名 ITEM NO. | 適用線徑 Wire Size mm | 內徑 (大) Dimensions D1 mm | 內徑 (小) Dimensions D2 mm | 包裝 PACKING |
|----------------|-------------------------|-------------------------------|-------------------------------|---------------|
| ECV- 1.25 | 1.25 | 3.3 | 3.1 | 100 pcs |
| ECV- 2 | 2 | 4.5 | 3.7 | |
| ECV- 3.5 | 3.5 | 5.7 | 4.1 | |
| ECV- 5.5 | 5.5 | 5.7 | 5.2 | |
| ECV- 8 | 8 | 7.2 | 6.2 | |
| ECV- 14 | 14 | 10 | 8 | |
| ECV- 22 | 22 | 12 | 9.5 | |
| ECV- 38 | 38 | 14 | 11.8 | |
| ECV- 60 | 60 | 17 | 13.9 | 50 pcs |
| ECV- 80 | 80 | 19 | 16 | |
| ECV-100 | 100 | 22 | 18 | |
| ECV-125 | 125 | 24 | 20 | |
| ECV-150 | 150 | 26 | 22 | |
| ECV-200 | 200 | 32.2 | 24 | |
| ECV-250 | 250 | 36.5 | 27.2 | |
| ECV-325 | 325 | 36.7 | 30 | 25 pcs |
| ECV-400 | 400 | 45.1 | 37.5 | |
| ECV-500 | 500 | 48.2 | 40.2 | |
| ECV-630 | 630 | 53.8 | 45.2 | |



PVC SHRINKING SLEEVE (29) PVC 收縮套管

◎材質：PVC
◎顏色：紅色、黑色、黃色、綠色、藍色、白色

- Material: Soft PVC
- Operation temperature: Under 80°C
- Color: Red, Black, Yellow, Green, Blue and White

| 品名 ITEM NO. | 折徑 Flat mm | 圓徑 Round mm | 熱收縮範圍 Range | 包裝 PACKING |
|-------------|------------|-------------|-------------|------------|
| HSS-4.0 | 4 | 2 | 4~2 | 100M |
| HSS-5.0 | 5 | 3 | 5~2.5 | |
| HSS-6.5 | 6.5 | 4.1 | 6.5~3.25 | |
| HSS-8.5 | 8.5 | 5.2 | 8.5~4.25 | |
| HSS-12 | 12 | 7.6 | 12~6 | |
| HSS-15 | 15 | 10 | 15~7.5 | |
| HSS-20 | 20 | 13 | 20~10 | |
| HSS-25 | 25 | 16 | 25~12.5 | |
| HSS-30 | 30 | 19 | 30~15 | |
| HSS-40 | 40 | 25 | 40~20 | |
| HSS-50 | 50 | 32 | 50~25 | |
| HSS-60 | 60 | 38 | 60~30 | |
| HSS-70 | 70 | 44 | 70~35 | |
| HSS-80 | 80 | 50 | 80~40 | |
| HSS-100 | 100 | 63 | 100~50 | |
| HSS-120 | 120 | 76 | 120~60 | |
| HSS-150 | 150 | 95 | 150~75 | |
| HSS-170 | 170 | 108 | 170~85 | |
| HSS-200 | 200 | 127 | 200~100 | |

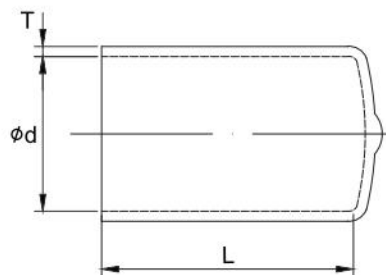
PROTECTS

配線保護零件

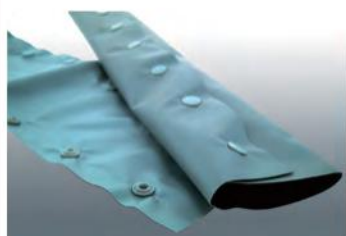


VCP CAP (23) 末端套管

- ◎材質：軟質 PVC
- ◎顏色：紅色、白色、黃色、藍色、綠色、黑色



| 品名 ITEM NO. | 內徑 d mm | 長度 L mm | 厚度 t ±0.2 mm | 包裝 PACKING |
|----------------|------------|------------|-----------------|---------------|
| VCP-1.7*16 | 1.7 | 16 | 0.8 | 2000 pcs |
| VCP-2.6*9 | 2.6 | 9 | 0.8 | |
| VCP-2.9*13 | 2.9 | 13 | 1 | 1000 pcs |
| VCP-4.0*8 | 4 | 8 | 1 | |
| VCP-5.7*13 | 5.7 | 13 | 1 | |
| VCP-7.0*13 | 7 | 13 | 1 | |
| VCP-7.6*8 | 7.6 | 8 | 1 | |
| VCP-7.6*15 | 7.6 | 15 | 1 | |
| VCP-8.0*10 | 8 | 10 | 1 | |
| VCP-8.5*9 | 8.5 | 9 | 1 | |
| VCP10*20 | 10 | 20 | 1 | 500 pcs |
| VCP12*16 | 12 | 16 | 1 | |
| VCP14*35 | 14 | 35 | 1.3 | 200 pcs |
| VCP22*16 | 22 | 16 | 1.3 | |



WRAPPING BAND (20) 扣式保護帶

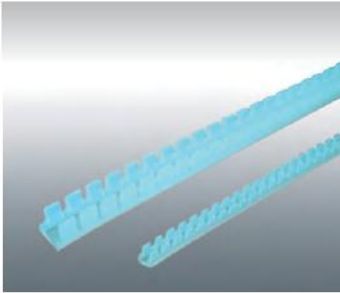
- ◎材質：PVC
- ◎顏色：灰色

- Material: PVC
- Color: Grey

| 品名 ITEM NO. | 鈕扣距離 O.D. mm | 最大束徑 Max. Dia. mm | 包裝 PACKING |
|----------------|-----------------|----------------------|------------------------------|
| WB-6 | 40 | 40 | 80 Yard (About 75 meters) |
| WB-8 | 60 | 60 | |
| WB-10 | 80 | 80 | |
| WB-12 | 100 | 100 | |
| WB-14 | 120 | 120 | |
| WB-16 | 140 | 140 | |
| WB-18 | 160 | 160 | |
| WB-20 | 180 | 180 | |

PROTECTS

配線保護零件

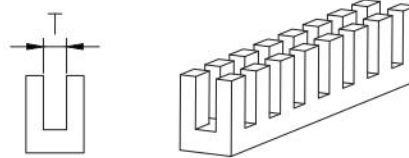


- Material: PE
- Color: Natural
- For Use: Cut to fit any hole sizes for protecting cords, wires and cables against damage from sharp panel edges.
- Remark: Flexible, durable and reusable

MOVABLE BUSHING

(21) 自由絕緣保護套

- ◎材質：PE
- ◎顏色：本色
- ◎適合出線孔大小不一或形狀不規則者使用，可用於電線電纜之保護



| 品名 ITEM NO. | 槽徑 T mm | 適用鐵板厚度 Max chassis thickness mm | 包裝 PACKING |
|----------------|------------|------------------------------------|---------------|
| MB-8 | 0.8 | 0.8 以下 | 10 M |
| MB-10 | 1.0 | 1 | |
| MB-16 | 1.6 | 1.0-1.6 | |
| MB-20 | 2.0 | 2 | |
| MB-24 | 2.4 | 1.6-2.4 | |
| MB-32 | 3.2 | 2.4-3.2 | |
| MB-45 | 4.5 | 3.2-4.5 | |



PVC TUBE

(26) PVC 耐電壓套管

- ◎材質：PVC
- ◎顏色：黑色；特殊顏色可接受訂製
- ◎工作溫度：-30℃ ~ 105℃
- ◎適用範圍：
低電壓回路絕緣保護用 300V；
高電壓回路絕緣保護用 600V

- Material: PVC
- Color: Black (other colors are also available upon request)
- Working temp.: -30℃ ~ 105℃
- Flammability: VW-1

| 品名 ITEM NO. | 內徑 mm | 厚度 mm | AWG | Min Thickness | 包裝 PACKING |
|----------------|----------|----------|------|---------------|---------------|
| PT-4.7 | 4.72 | 0.45 | 5 | 300 V | 305m |
| PT-5.28 | 5.28 | 0.45 | 4 | 300 V | |
| PT-5.9 | 5.94 | 0.45 | 3 | 300 V | 152m |
| PT-6.6 | 6.68 | 0.45 | 2 | 300 V | |
| PT-7.5 | 7.47 | 0.45 | 1 | 300 V | |
| PT-8.4 | 8.38 | 0.45 | 0 | 300 V | |
| PT-9.5 | 9.53 | 0.6 | 3/8 | 600 V | 100m |
| PT-11 | 11.1 | 0.6 | 7/16 | 600 V | |
| PT-12.7 | 12.7 | 0.6 | 1/2 | 600 V | |
| PT-14 | 14 | 0.6 | 9/16 | 600 V | 50m |
| PT-16 | 15.9 | 0.69 | 5/8 | 600 V | |



PRODUCT CATALOG

尼龍束帶 CABLE TIES



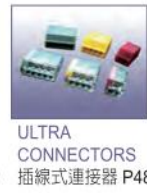
配線固定零件 TIE MOUNTS CLAMPS



配線保護零件 PROTECTS



電線接頭端子 CONNECTORS



配線槽 WIRING DUCTS



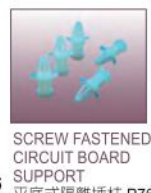
配線標誌 CABLE MARKERS



電纜固定頭 CABLE GLANDS



PC板固定零件 P.C.B FASTENERS





Samples & Complete Catalogue Available 如需樣品和完整目錄歡迎洽詢



SECURITY SEAL TIE 保全束帶 P13
CABLE TIES AND FIR TREE MOUNT ASSEMBLIES 束帶含插銷固定座 P14
PUSH MOUNT TIES 插銷式束帶 P15
BEAD TIES 珠型結束帶 P16
CORD BAND TIES 電源收線結束帶 P16
GRIP TIES 黏扣帶 P18
BEAD SELF-LOCKING STAINLESS STEEL TIES 珠式不鏽鋼束帶 P19-20
STAINLESS STEEL BANDING 不鏽鋼鋼捲 P21
STAINLESS STEEL BUCKLE 不鏽鋼鋼扣 P21
CABLE TIE TOOLS 束帶工具 P22



FLAT CABLE CLAMPS 貼式排線固定夾 P26
TWIST LOCKS 扭式束線扣 P27
CABLE CLIP 白扁線固定夾 P27
CABLE CLIP 入釘式電纜固定夾 P28
NON-PERFORATED HOSE CLAMP 歐式管夾 P29
PERFORATED HOSE CLAMP 美式管夾 P30
Band Clamp 捲式管夾 P31
EAR HOSE CLAMP 耳式管夾 P31
ADJUSTABLE EAR HOSE CLAMP 可調式耳式管夾 P31-32
RUBBER NAIL CLAMP 橡膠水管固定夾 P33



SILICON COATED FIBERGLASS SLEEVE 玻璃纖維套管 P39
SPLIT BRAIDED SLEEVING 刮開式編織網管 P40
SPLIT BRAIDED SLEEVING 車用編織網管 P40
STRAIN-RELIEF BUSHINGS 電源線扣 P41
HOLE PLUGS 扣式塞頭 P41
SNAP BUSHINGS 扣式護線環 P42
SPIRAL WRAPPING BAND 捲式結束帶 P43
FAST SPIRAL WRAPPING BAND 快速蛇捲 P43
VINYL END CAP 絕緣套管 P44-45
PVC TUBE PVC 耐電壓套管 P46



TERMINAL BLOCK 端子台 P50
INSULATED RING TERMINALS R 圓型絕緣端子 P51
INSULATED FORK/ SPADE TERMINALS Y 型絕緣端子 P51
BLADE TERMINALS 扁平型絕緣端子 P53
INSULATED PIN TERMINALS 針型絕緣端子 P53
HEAT SHRINK BUTT CONNECTORS 熱收縮中接管 P54
INSULATED FEMALE DISCONNECTORS 公母插 - 母 P55
INSULATED MALE DISCONNECTORS 公母插 - 公 P55
INSULATED BULLET FEMALE DISCONNECTORS 子彈型端子 - 母 P56
SINGLE WIRE END SLEEVE 單線型歐式端子 P57-58



DOUBLE-SIDED FOAM TAPE 雙面膠帶 P65



MARKING PEN 速乾筆 P70



MARKING MACHINE 打字機 P70



DAMPER P80



REVERSE SPACER SUPPORT PC 板間隔柱 P77
MUSHROOM SPACER SUPPORTS 平頂隔離插柱 P77
PLASTIC SCREWS 塑膠螺絲 P78
PUSH RIVETS 推式鉚釘 P78
DIN RAILS 鋁軌 P79
ANCHOR CLIP 錨釘 P79
PUSH RIVET 推式鉚釘 P79
SCRIVET 鉚釘 P79
TRIM CLIP 平頂隔離插柱 P80
CABLE CLIP 束帶工具 P80



RELIABLE · CREATIVE · PERSONAL
科學化研發 · 專業化製造 · 先進化管理



YONYU GROUP

Y.Y. CABLE ACCESSORIES CO., LTD.
YONYU PLASTICS CO., LTD.
YONYU APPLIED TECHNOLOGY MATERIAL CO., LTD.

精奕興業股份有限公司
永裕塑膠工業股份有限公司
新永裕應用科技材料股份有限公司

WORLDWIDE HEADQUARTER & SALES OFFICE
107, Sheng Li Road, Jen-Teh District,
Tainan City, Taiwan

TEL: 886-6-7020888(REP.) 886-6-2705577
FAX: 886-6-2702943 886-6-2795295

<http://www.yy-yonyu.com.tw> · <http://www.yy-yonyu.com.cn>
E-mail: sales@yy-yonyu.com.tw · Skype: sales-yy

- 新田總廠 HSIN-TIEN FACTORY
台灣省台南市仁德區新田里勝利路107號
- 勝利二廠 SHENG-LI FACTORY
台灣省台南市仁德區新田里勝利路100號
- 勝利三廠 SHENG-LI FACTORY
台灣省台南市仁德區新田里勝利路125號
- 上海總廠 SHANG HAI FACTORY
上海市閩行區常青工業區都會路335弄88號